



Cecil District Klondike Derby

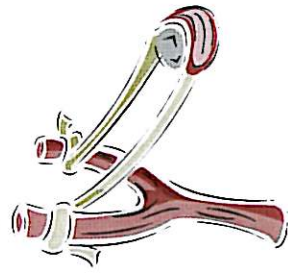
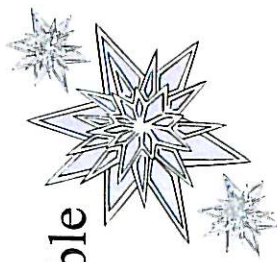
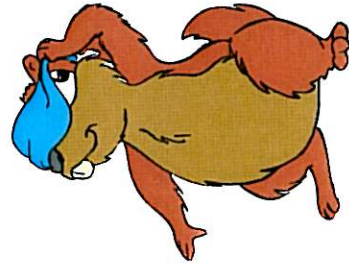
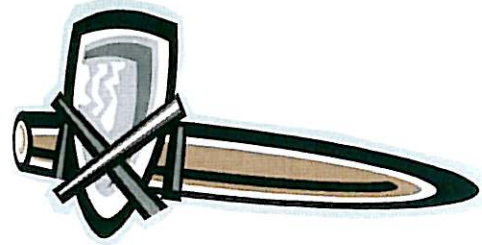
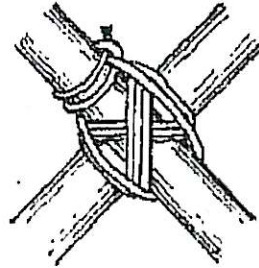
January 14-16, 2011

Host Unit: BSA Troop 131, North East, Md.

Cost: \$12.00 per scout, \$5.00 per Webelo, \$5.00 per adult

Unit Registration Information to be distributed @ December Roundtable

Host Unit Contact: Allan Parker @ A55Parker@AOL.com
or Mark Mears @ mmears@uhcc.com



Back to the Basics Experience



Important Event Information:

Proper footwear is a must for this event. Hiking boots are strongly recommended.

Tennis shoes ARE NOT PERMITTED.

For the events on Saturday, units are encouraged to wear “Gold Rush” type attire. Research the clothing of that time period and outfit your patrol. Plan on getting dirty, and having fun. Old clothes are great.

As always for this type of event, dress in layers so you can adjust with the temperature changes. Expect snow and/or rain.

Saturday Stations;

First Aid – Be prepared to treat members of your patrol for ailments that could occur on a hike or wilderness camping trip.

Sling Shots – Accuracy is important to earn gold needed to pay for your supplies.

Fire Building – Be prepared to build a one match or matchless fire.

Tomahawk Throwing - Accuracy is important to earn gold needed to pay for your supplies.

Lashings - You never know what you may find on the trail that may need to be moved.

Orienteering – The shortest point between two points is a straight path, however the richest path will be to locate all of the points.

Snooshboard Race – Teamwork, Teamwork, Teamwork

Handicapped Awareness – Working with a group of visually impaired scouts you will be asked to establish a patrol campsite.

Saturday Evening:

Golden Skillet Contest – Whip up your best meal and bring it to the judges to sample. (feeding three people) Due to food allergies a complete listing of ingredients is required

Saturday Night

Klondike Kates – This will be where your hard work throughout the day will pay off. Bring the gold nuggets that you earned at the various stations to this event and receive your bounty. Guaranteed fun for young and old alike.

Items to be carried on Sleds:

- | | | |
|--------------------------------------|---------------------------|------------------------------------|
| 1 – old tent (complete with poles) | First Aid Kit | Old wool (or fleece) blanket |
| 8 – Pieces of ¼” rope, 12’ in length | BSA Handbook | Compass |
| Patrol Flag | 1 – gallon drinking water | Gold dust bag (1 gallon cloth bag) |
| 1 – Totin Chip card | 1 – Firem’n Chit card | 1 – roll Duct Tape |

Materials to build a one match or matchless fire and adequate fuel to boil 2 qt’s of water.

- 2 – 7’ staffs (2”x3” building studs) 2 – 3’ staffs (2”x3” building studs)

Materials for emergency first aid: splints, slings, bandages

KLONDIKE SLEDGE

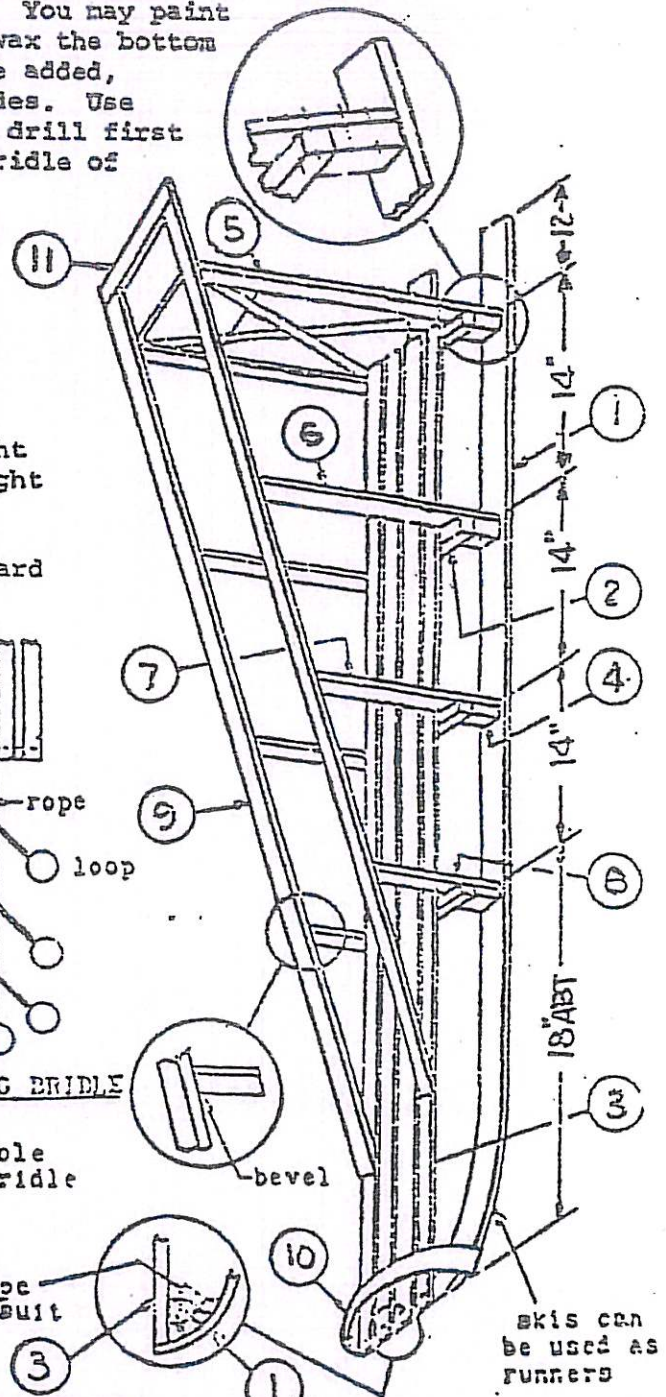
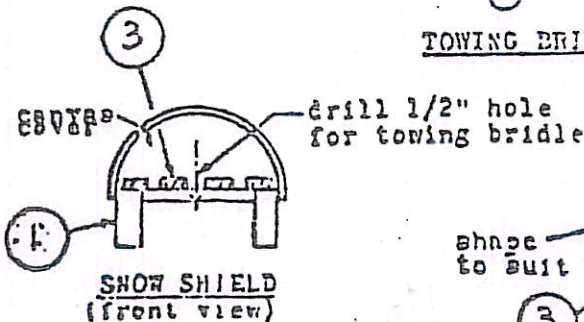
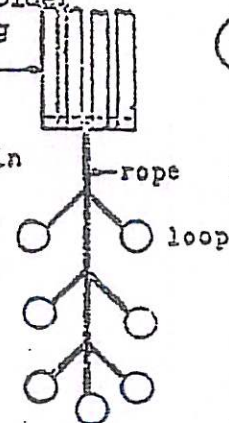
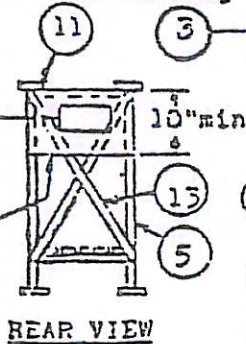
While your own design will be accepted, this diagram shows an authentic sledge. You may paint them bright colors but varnish or wax the bottom of the runners. Accessories may be added, canvas snow guard for front and sides. Use bolts or screws instead of nails - drill first to avoid splitting. Make towing bridle of rope, about 20 feet.

Bill of Material

Pt.	Qty.	Description
1	2	4"x $\frac{1}{2}$ "x6'6" - runner
2	6	1"x1"x18" - cross support
3	4	$\frac{1}{2}$ "x4"x5' - floor cover
4	8	1"x2"x6" - upright support
5	2	1"x2"x40" - rear upright
6	2	1"x2"x30 $\frac{1}{2}$ " - 2nd rear upright
7	2	1"x2"x21 $\frac{1}{2}$ " - 2nd front upright
8	2	1"x2"x12" - front support
9	2	$\frac{1}{2}$ "x2"x6'0" - hand rail
10	1	$\frac{1}{2}$ "x2"x30" - front curved guard
11	1	2"x2"x18" - rear hand rail
12	1	$\frac{1}{2}$ "x10"x18" - pocket holder
13	2	1"x2"x to suit bracing

Envelope type pocket tack or staple, so Assay Report (6"x8") can be slipped in.

OR
CLIPBOARD



NOTE: SLEDGE MUST BE MADE OF WOOD WITH THE EXCEPTION OF SKIS AS RUNNERS.
SLEDGE MUST BE CONSTRUCTED BY THE BOYS WITH ADULT SUPERVISION